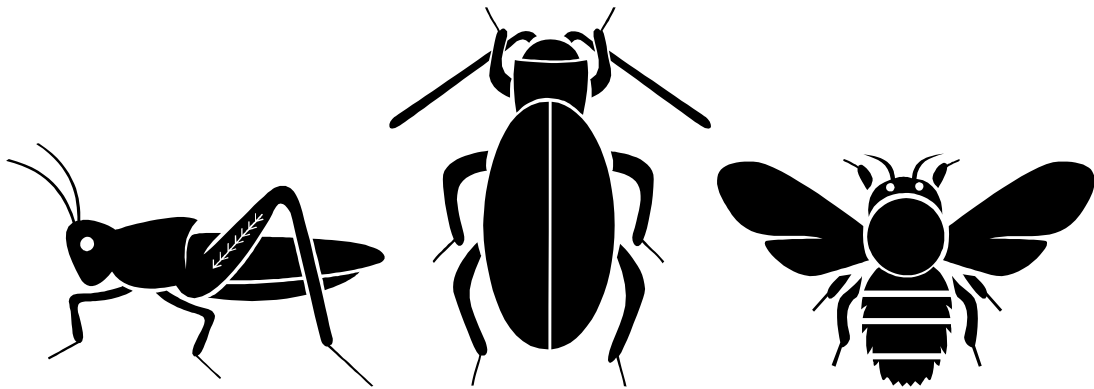


Insect Field Guide

A WebQuest Project



Entomologist _____

School _____

Date _____

Treasure Hills TIF Project
<http://harlingen.isd.tenet.edu/tif/index.html>

Honey Bee

Where does it live? _____

What does it eat? _____

How is it helpful? _____

An interesting fact about this insect _____

What does it look like?



Ladybug


Where does it live? _____

What does it eat? _____

How is it helpful? _____

An interesting fact about this insect _____

What does it look like?



Praying Mantis

Where does it live? _____

What does it eat? _____

How is it helpful? _____

An interesting fact about this insect _____

What does it look like?



Aphid

Where does it live? _____

What does it eat? _____

How is it harmful? _____

An interesting fact about this insect _____

What does it look like?

A large empty rectangular box with a black border, intended for a drawing or detailed description of the aphid's appearance.

Termites

Where does it live? _____

What does it eat? _____

How is it harmful? _____

An interesting fact about this insect _____

What does it look like?

A large empty rectangular box with a black border, intended for a drawing or detailed description of a termite.

Cicadas

Where does it live? _____

What does it eat? _____

How is it harmful? _____

An interesting fact about this insect _____

What does it look like?



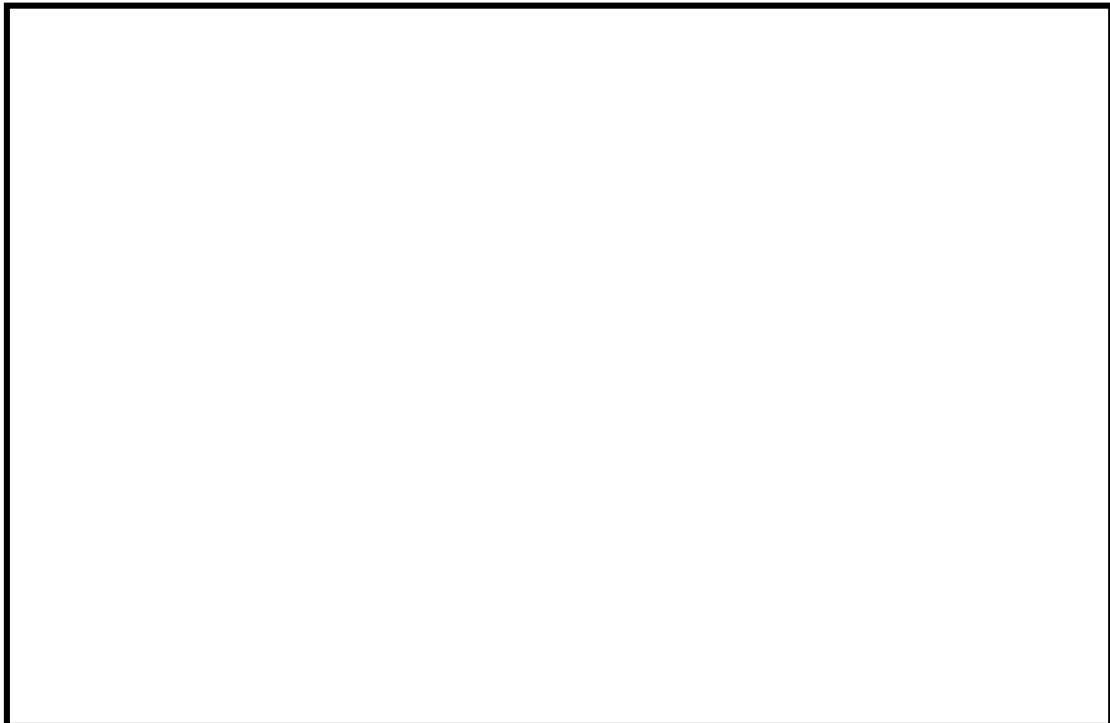
Cockroach

Where does it live? _____

What does it eat? _____

An interesting fact about this insect _____

What does it look like?



Goliath Beetle

Where does it live? _____

What does it eat? _____

An interesting fact about this insect _____

What does it look like?

A large empty rectangular box with a black border, intended for a drawing or detailed description of the Goliath Beetle's appearance.

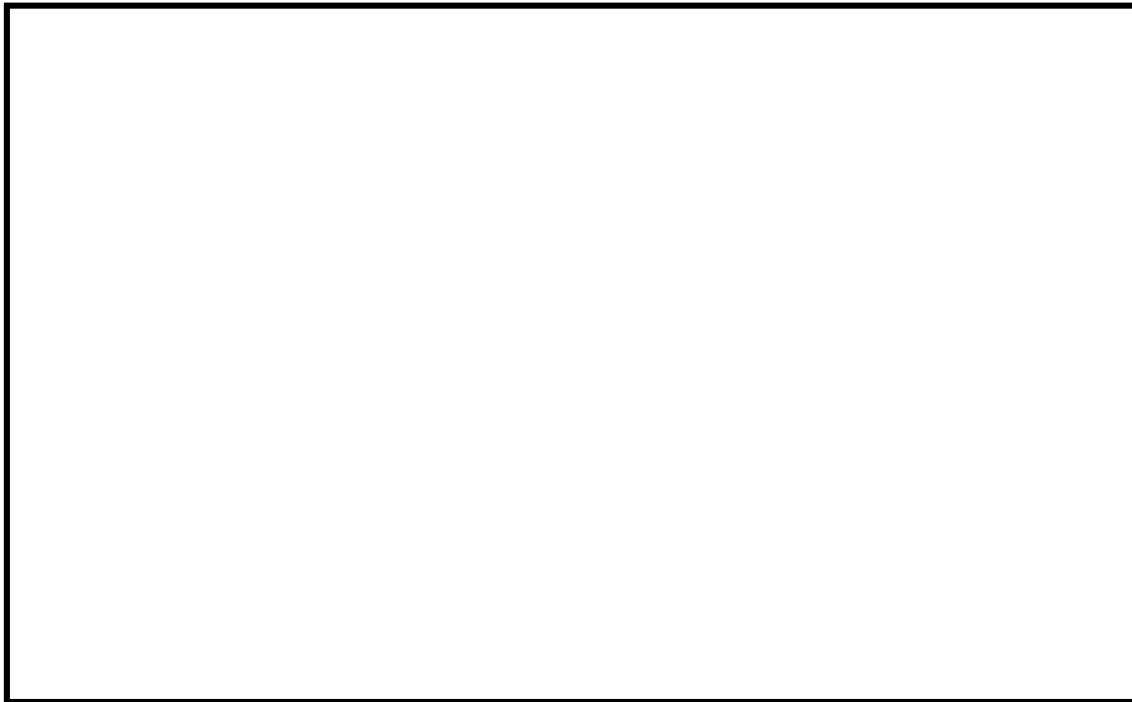
Dragonfly

Where does it live? _____

What does it eat? _____

An interesting fact about this insect _____

What does it look like?

A large empty rectangular box with a black border, intended for a drawing or detailed description of the dragonfly's appearance.

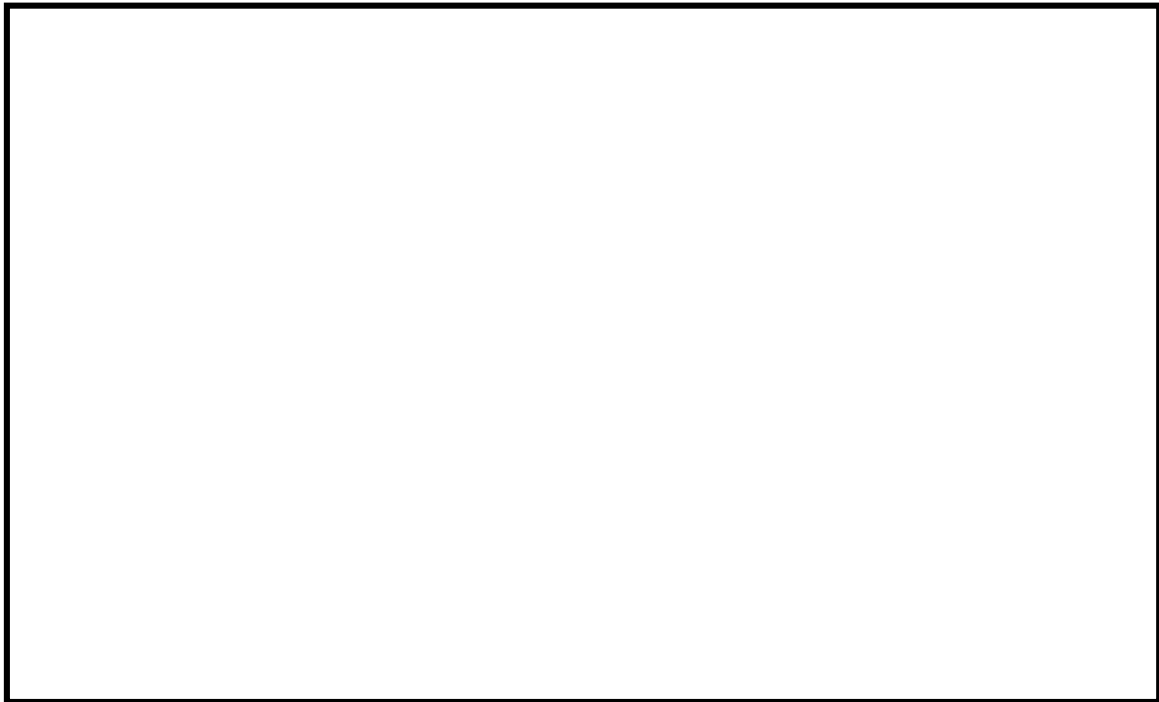
Water Strider

Where does it live? _____

What does it eat? _____

An interesting fact about this insect _____

What does it look like?

A large, empty rectangular box with a black border, intended for a drawing or detailed description of the water strider.